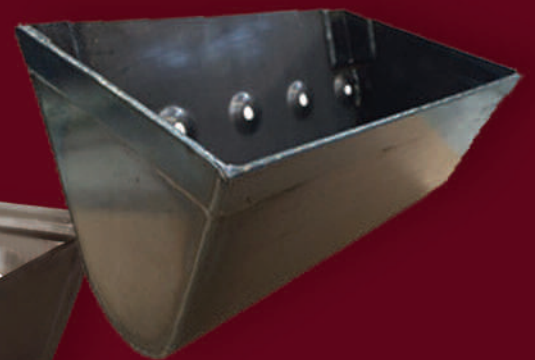
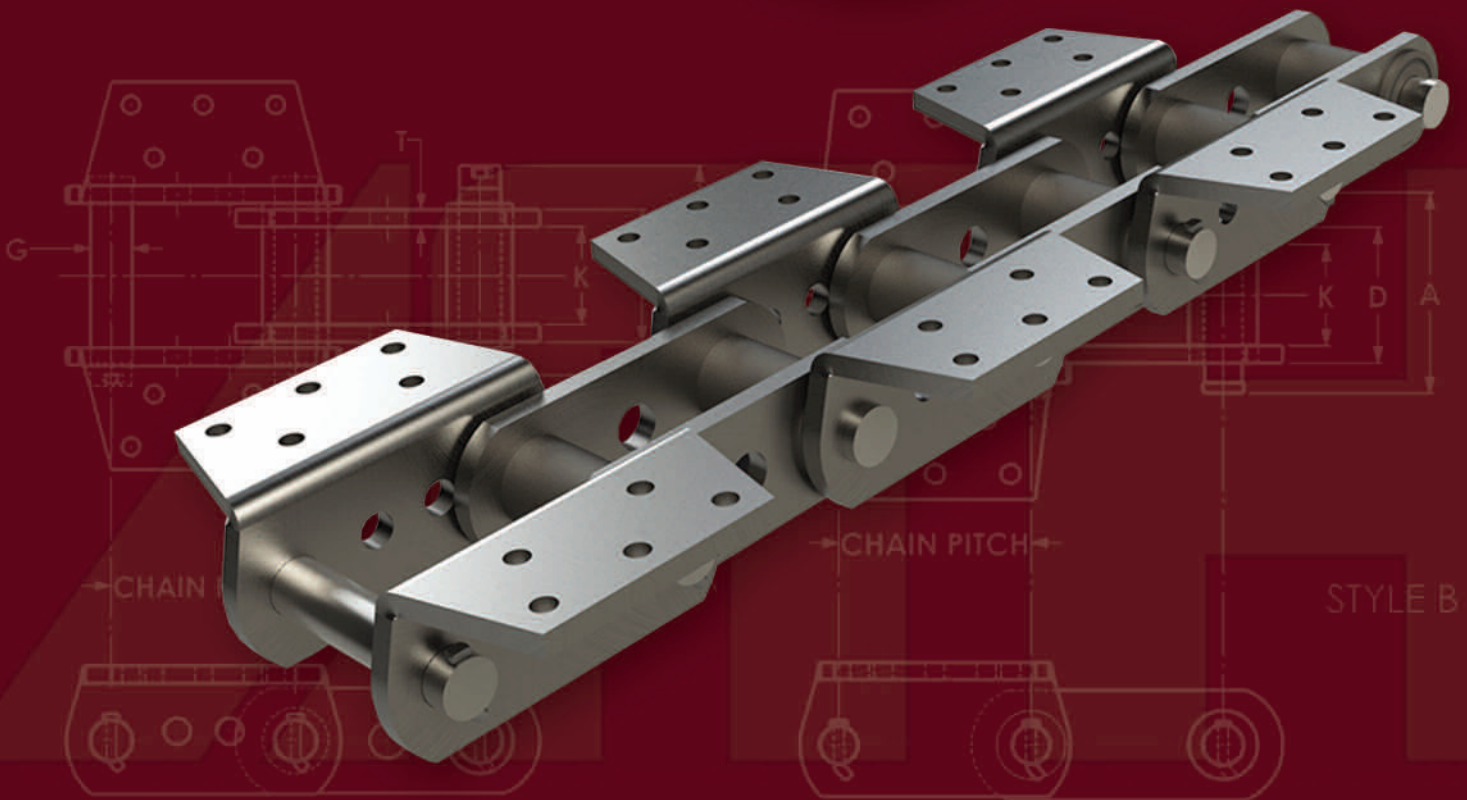




### Industries Served:

- Pulp & paper
- CO-Generation
- Mining/Oil & Gas
- Cement
- Potash





# Elevator Chains

**AMH** is now stocking the most common sizes and configurations with competitive pricing. These chains are high quality and feature fully heat treated sidebars, through hardened and further induction hardened pins and bushings, and tight press fits during assembly. AMH has selected ideal material to obtain maximum hardness and strength. Fully sealed bushings are available upon request.

- 994 Elevator Chain Including K44 ATT (Sealed Joint)
- 856 Elevator Chain Including K24 ATT
- 984 Elevator Chain Including K44 ATT
- 956 Elevator Chain Including K24 ATT
- All Matching Sprockets, Drives and Idlers
- 864 Elevator Chain Including K44 ATT
- 857 Elevator Chain Including K44 ATT
- 859 Elevator Chain Including K44 ATT
- Elevator Buckets

## Elevator Chain Dimensions

CHAIN NUMBER	PITCH	STYLE	A	K	T	SIDEBARS		PINS		BUSHINGS			SPROCKET NUMBER
						F	HEAT TREAT	G	HEAT TREAT	D	I	HEAT TREAT	
AMH856	6.00	A	6.44	3.00	0.50	2.56	THRU HARD	1.00	IH	4.00	1.75	IH	856
AMH956	6.00	A	6.44	2.98	0.50	3.00	THRU HARD	1.00	IH	3.98	1.74	IH	856
AMH857	6.00	A	6.44	3.00	0.50	3.25	THRU HARD	1.00	IH	4.00	1.75	IH	856
AMH958	6.00	A	6.44	3.00	0.56	3.25	THRU HARD	1.13	IH	4.13	2.00	IH	958
AMH859	6.00	B	7.74	3.75	0.62	4.00	THRU HARD	1.25	IH	5.00	2.38	IH	859
AMH864	7.00	B	7.74	3.76	0.63	4.00	THRU HARD	1.25	IH	5.02	2.38	IH	864
AMH984	7.00	B	7.74	3.69	0.63	4.00	THRU HARD	1.37	IH	4.95	2.50	IH	984
AMH994SJM	7.00	A	8.38	3.72	0.65	4.00	THRU HARD	1.58	IH	2.50	5.02	IH	944





# Elevator Chains

Elevator Chain Attachments													
CHAIN NUMBER	ATTACHMENT STYLE	A	B	C	D	E	F	G	H	J	K	T	WEIGHT
AMH856	K24	7.25	1.75	1.88	0.69	2.50	9.75					0.50	27.5LBS
AMH956	K24	7.28	1.75	1.88	0.69	2.50	9.50					0.50	29LBS
AMH857	K44	7.00	1.25	2.50	0.56	3.50	14.00	12.00	5.50	1.25	3.50	0.50	38LBS
AMH958	K44	7.00	1.25	2.50	0.56	3.50	13.68	12.00	5.75	1.25	3.50	0.50	40LBS
AMH859	K44	9.00	1.62	3.00	0.69	2.75	15.00	13.00	5.92	0.75	4.50	0.62	59LBS
AMH864	K443	9.00	1.62	3.00	0.69	3.75	15.12	13.00	7.32	0.75	5.50	0.63	55LBS
AMH984	K443	9.00	1.62	3.00	0.69	3.75	14.88	13.00	7.32	0.75	5.50	0.63	58LBS
AMH994	K443	9.00	1.62	4.87	0.67	3.75	14.75	13.00	7.00	0.75	5.50	0.63	58LBS

